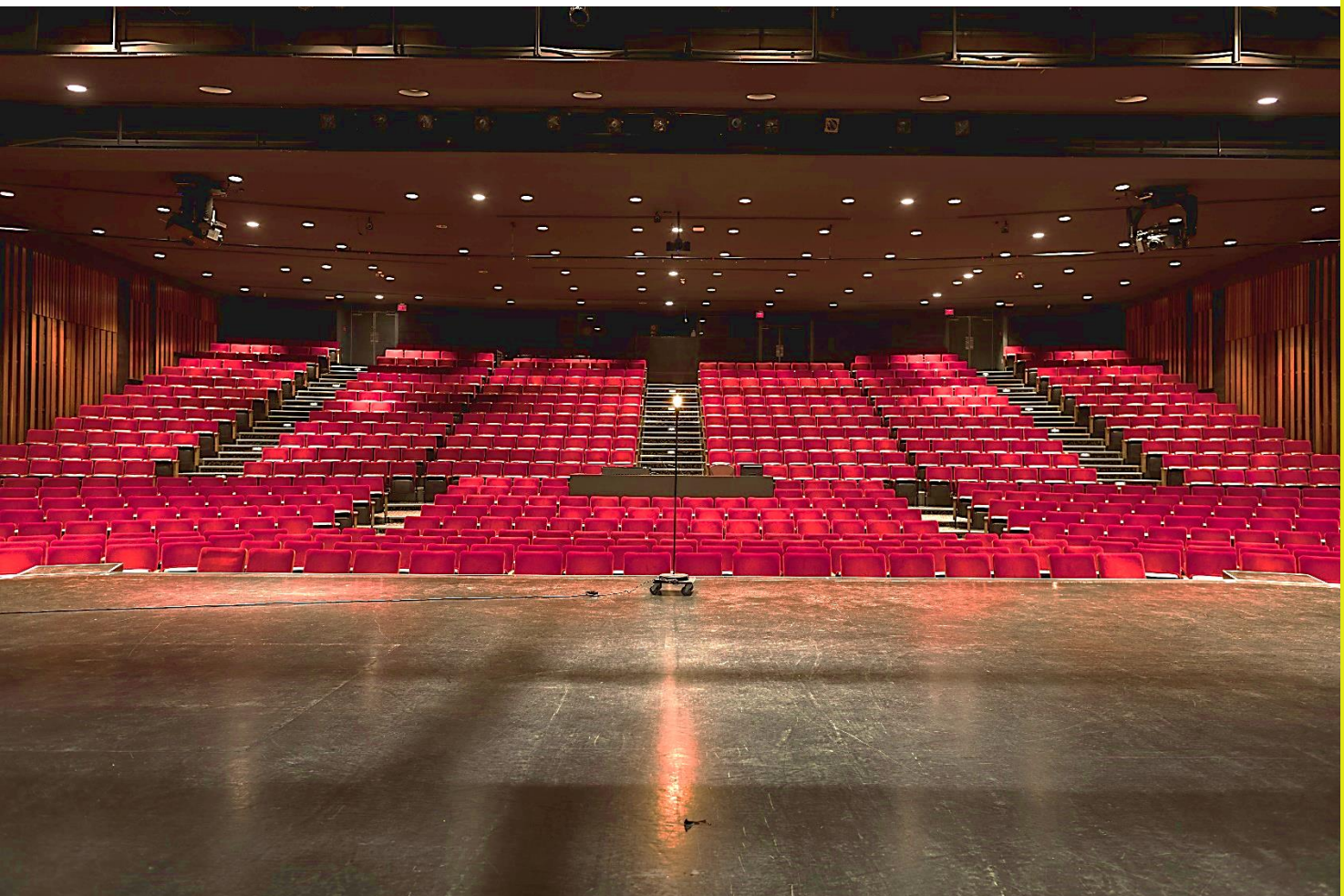


1111, rue Lapierre
Montréal, H8N 2J4
514-367-6373
theatredesjardins.com



TECHNICAL RIDER SALLE JEAN GRIMALDI



Are you organizing a show, a prize recognition, a conference, a general assembly or are you touring and coming to our venue to present your event in our theater?

Here is what Théâtre Desjardins has to put to your disposition :

- A magnificent venue of 813 comfortable seats or possibility of more intimate venue of 314 seats.
- A 1000 parking available, easily accessible by main highway accesses (Mercier bridge, Champlain bridge, Highway 15 and 20) and also near from Angrignon metro station.
- An usher service, bar and a ticket office.
- Possibility of also renting many different locals like classroom, reunion spaces, cafeteria, student coffee room and gymnasium to accommodate you in your specific needs.

Informations

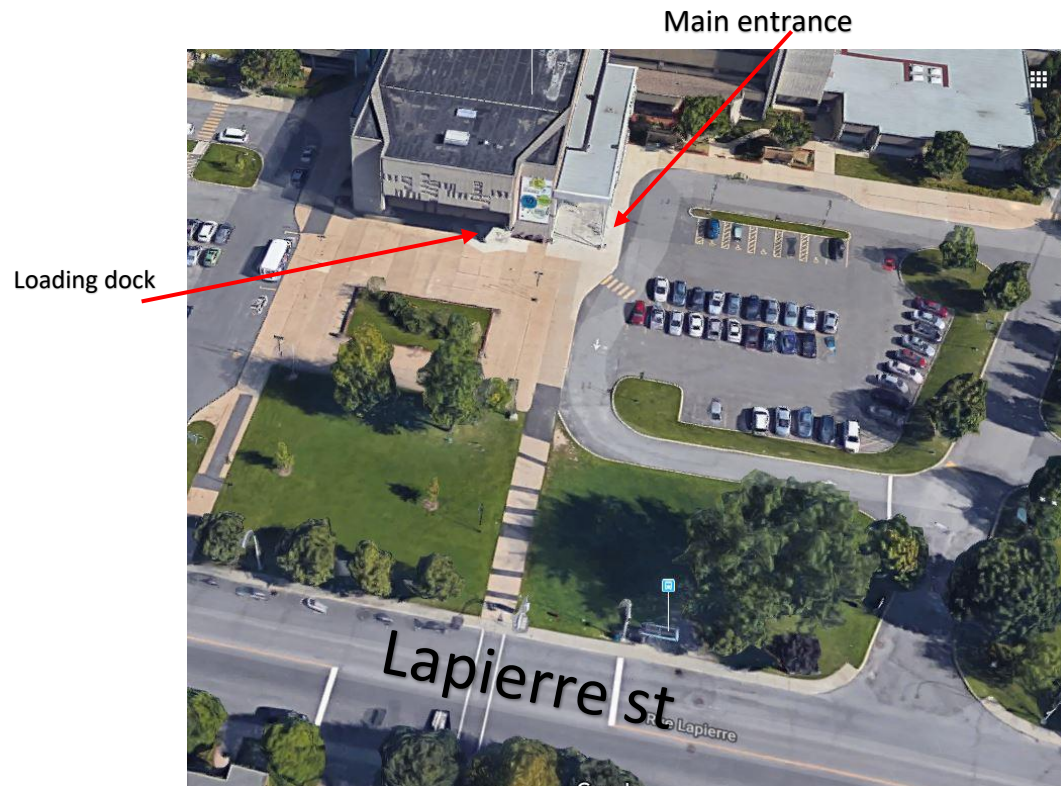
Mélissa Turcotte
Technical Director
Phone : 514 367-6373 #110
E-mail : dt@theatredesjardins.com

Line Hamel
Operation and Rental Director
Phone : 514-367-6373 #102
E-mail : location@theatredesjardins.com

Please note that the available equipment list can change without notice. Contact the Technical Director to assure availability.

→ ADDRESS

Main and Artist entrance
1111 Lapierre Street
Montréal H8N 2J4



→ ARTIST ENTRANCE / LOADING DOCK

Access by Lapierre Street, parking lot near door 4

LOADING DOCK :

Access by Lapierre Street, parking lot near door 10

FREIGHT ELEVATOR (Access to stage) :

Depth 9'6" Height 8' Width 7'6" Diagonal 12'6"

→ *Note that the unloading of the gear must be done with ramp access only and any piece of set of gear that can't fit the elevator must go up through the staircases.*

→ HOUSE

Capacity

Full House : 813 seats

Half House : 314 seats

On Stage Cabaret : maximum of 110 seats

→ STAGE

Resilient wood flooring covered with black linoleum

→ ***Strictly forbidden to screw or nail in the stage floor***

Opening of the proscenium

Depth of the proscenium	6'0"	1.8 m
Depth from stage frame to Back drop	36'6"	11.2 m
Width	47'8"	14.5 m

Stage Frame

Opening of stage frame	47'8"	14.5 m
Height of stage frame	17'5"	5.3 m
Height of the Grid	18'3"	5.6 m
Width of the stage	55'5"	16.9 m
Stage Right Backstage access	6'6"	2 m
Stage Left Backstage access	3'3"	1 m

→ STAGE CURTAINS AND BORDERS

Curtains

- 1 House curtain, black velvet, permanent, manual opening/closing
- 1 Back drop, black velvet, permanent, manual opening/closing
- 1 House border, black velvet, permanent
- 5 Set of black velvet Legs: width of 13' height of 18'3"
- 2 Germans, black velvet, permanent: width 25' height of 18'3"
- 3 Black velvet Borders: width of 48' height of 18"

Cyclorama

- 1 White fabric Cyclorama : width of 48' height of 20', semi-permanent

→ FOH BOOTH

The FOH booth is set by half house, close from 12' width

Distance from half stage to FOH booth : 49'6"

→ POWER SUPPLY

Lighting Departement

1 x Triple phased 400A cam-lock 120/208V, backstage right

Sound

1 x Triple phased 200A cam-lock 120/208 V, backstage, 50' from each side

→ DRESSING ROOMS

Both dressing rooms are backstage, less than 15' from stage. Access from both stage right and stage left.

Big dressing room

Up to 8 person. Flat screen TV with Bell terminal

Small dressing room

For 1 or 2 person

→ *Both dressing room are equiped with restrooms, sinks, showers and mirrors.*

→ LIGHTING

Boards

ETC Express 48/96

MA Lightning DOT 2 with Fader Wing

Grand MA 3 light

Dimmers

96 2.4 K dimmers Strand CD80

→ 24 F.O.H catwalk Dimmers

→ 60 grids dimmers

→ 12 floor dimmers

Lights

4 Leko ETC Source Four 19 degrees 750W

12 Leko ETC Source Four 26 degrees 750W

12 Leko ETC Source Four 36 degrees 750W

4 Leko ETC Source Four Zoom 25-50 750W

20 Leko ETC Source Four Zoom 25-50 750W (*fixed on the FOH catwalks*)

24 Par ETC Source Four 750W (lens options: *Wide, Medium, Narrow, Very Narrow*)

24 Par64 1000W (bulb options: *Wide, Medium, Narrow, Very Narrow*)

16 Fresnel ETC Source Four 750W

8 Fresnel Strand Fresnelite 6" 1000W

6 Iris Skycyc3 Altman 1000W

8 Chauvet Rogue R2 Spot Standard mode 310W 120V

24 Chauvet Colorado 3 Solo TOUR mode 187W 120V

Follow Spot

Robert Juliat Victor 1800W

Smoke/Haze Generator

MDG Atmosphère

→ SOUND

Système de sonorisation

Furman power distribution 120 V

- 1 DB25 Yamaha 8 entry line card
- 8 Pre-amp Yamaha MLA8
- 1 DSP audio Yamaha DME64N processor
- 1 Ethersound Auvitrans AVY16-ES100 Card
- 1 Tascam 450 CD Player
- 1 CD Denon DN-C635 Auto Cue CD Player
- 1 SSD/CD Tascam SS-CDR1 Recorder

PA Speakers

- 12 Meyer Sound Mina full range Speakers
- 2 Meyer Sound CQ1 full range Speakers
- 2 Meyer Sound 700-Hp subs

Microphones

- | | |
|----------------|--------------|
| 6 x SM 58 | 5 x 935 |
| 4 x SM 57 | 1 x B52 |
| 2 x 906 | 1 x Beta 91 |
| 3 x 904 | 2 x PZM 30D |
| 2 x 914 | 4 x PCC 160 |
| 2 x AKG C460B | 1 x Beta 57 |
| 2 x AKG SE300B | 6 x NT5 |
| 1 x MD 421 | 1 x AT8542 |
| 2 x 965 | 2 x MX18 POD |

Wireless

- 4 Sennheiser EW-335-G3 Handheld
- 2 Sennheiser EW-835-G3 Handheld
- 2 Sennheiser EW-352-G3 Body pack
- Shure UC Body pack/Handheld/ GTR 124C/58 mic set

Mic stands

- 18 K&M long telescopic pole *Silver*
- 5 K&M short telescopic pole *Silver*
- 4 K&M Atlas *Black*
- 4 Table mic stand *Black*
- 2 stereo bar

- 4 M1D full range Speakers

Amplification

- 4 Crown XT4000 amplified monitors
- 1 Lab Gruppen C20:8X Amplified delay

Monitors

- 6 12" JBL SRX712M Stage monitors
- 2 15" JBL VRX915M Stage monitors
- 4 QSC HPR 122 (pre-amplified) monitors

Boards

- Midas M32 with Digital Patch DL32
- Allen & Heath DLive C3500 with DM48

- 2 x Shotgun
- 4 x JDI active
- 4 x JDI passive
- 2x JDI stereo passive
- 2 x DI stereo digiflex
- 2 x DI passive digiflex

Wires

- 2 Sub Snake 8/4 x 50'
- 1 Sub Snake 16/4 x 50'
- 1 Sub snake 12/4 x 100'
- 40 XLR 10'
- 70 XLR 25'
- 30 XLR 50'

→ VIDEO

- 1 Christie Digital, HD1 DLP laser 9K Video Projector **Fixed, can't be moved**
- 1 2.9 à 5.50 :1 zoom GS series Lens

- 1 1.52 à 2.89 : 1 zoom GS series Lens
- 1 Motorized Screen 133" x 236" HDTV Da-Lite Professional
- 1 Withe fabric Cyclorama 48' (14.6 m) width, 20' (6.1 m) height
- 1 Roland V40 HD Video Switcher
- 2 MacBook pro with Qlab
- 1 PC with Office Suite

Cables and adaptors on demand (HDMI, SDI, Cat5)

→ EQUIPEMENT / ACCESSOIRES

- 1 JLG MLV-20 Lift
- 14 Manhasset Music stands
- 14 Lights for Music stands
- 4 Boom bases, X shaped (metal)
- 4 Boom bases, round (metal)
- Boom pipes: 2 x 14', 1 x 12', 8 x 10', 2 x 7', 4 x 6', 1 x 4'
- Sandbags
- 18 Self standing curtains 13'x 14'

Risers

- 10 4' x 8' risers

Riser legs

- 36 12" riser legs
- 36 18" riser legs
- 36 24" riser legs
- 6 36" riser legs

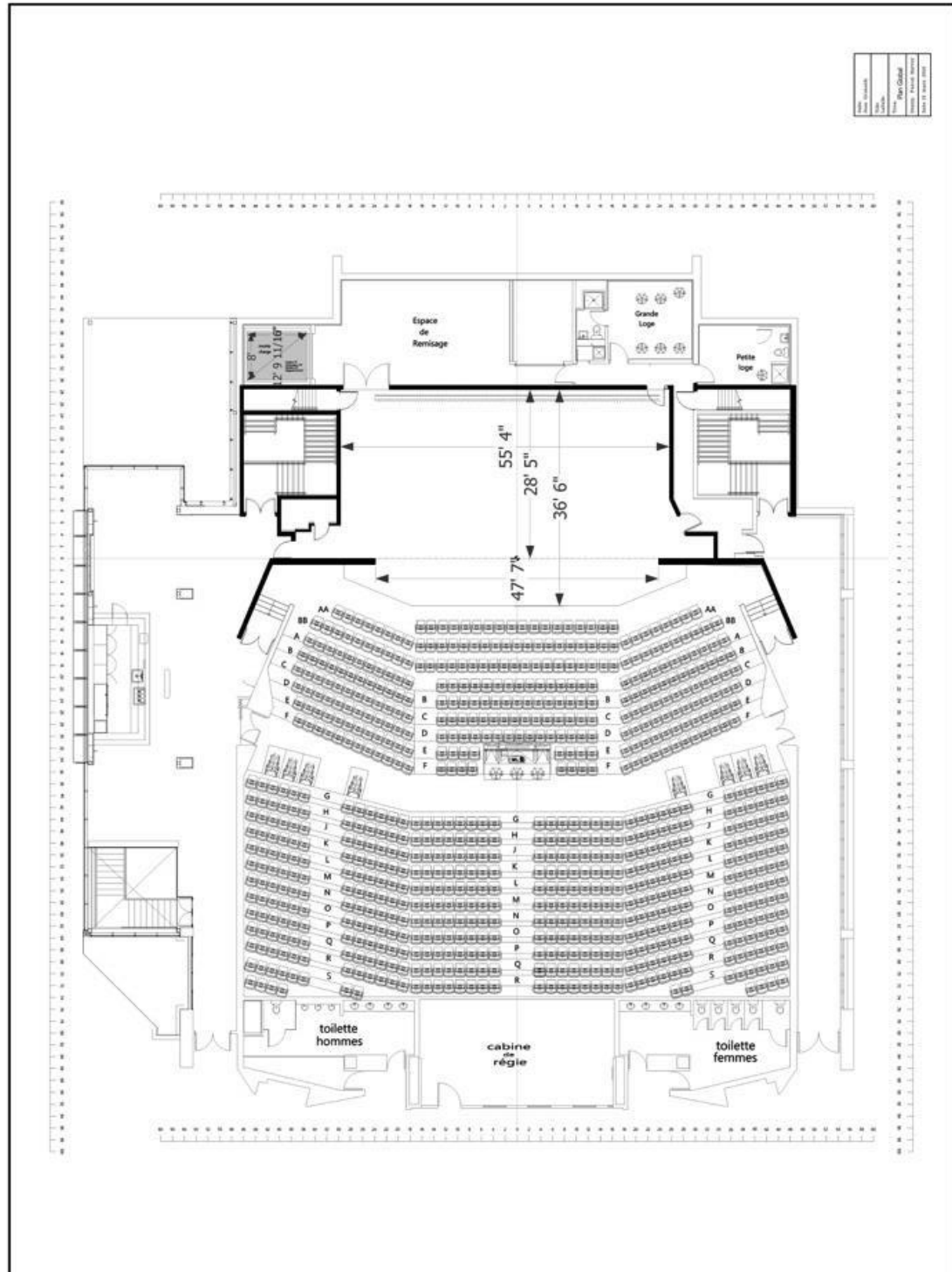
Système d'interphone

- 5 Clearcom CC-95 1 ear Headset
- 6 Clearcom CC-260 2 ears Headset
- 6 2 channels Belt pack
- 4 2 channels Wireless belt-pack

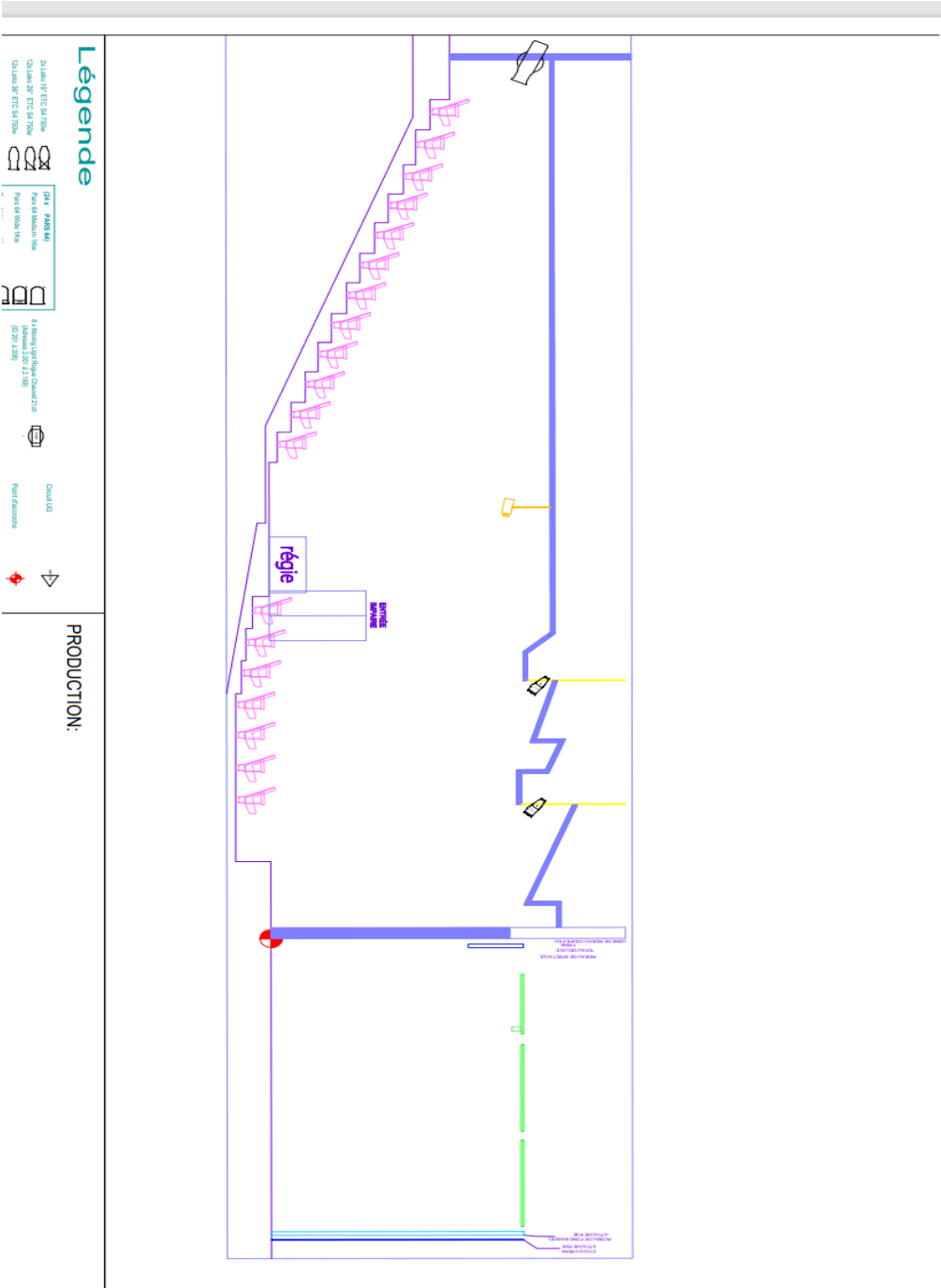
Music Instruments

- 1 Yamaha C7 Grand Piano

→ STAGE PLOT



→ GRIDS TOP VIEW



JEAN-GRIMALDI

NOTES

Direction Technique
Karine Gagnon
514.293.4389
dt@theatredesjardins.com

PLAN COUPE

8 6 4 2



- LES 25°/50° ETC SONT FIXES AU FOH

Direction Technique
Karine Gagnon
514.293.4389
dt@theatredejsjardins.com

PLAN FOH

[illegible]