



TECHNICAL RIDER

TECHNICAL DIRECTOR

Patrick Gagnon

514-962-4086

dt@theatredesjardins.com



1111, rue Lapierre

LaSalle, H8N 2J4

514-367-6373

www.theatredesjardins.com

Whether you are organizing a corporate event, a concert, a general assembly, a talent show, a gala or a conference we provide :

- A large-scale hall designed to accommodate spectators and clients with comfort and ease;
- 813 comfortable seats offering optimal stage views at every vantage point stage and a 314 half-hall configuration;
- State-of-the art projection and sound technology;
- Bar, ticket office, ushers and coat check;
- Located near main highways and bridges (Champlain and Mercier), our venue offers a large parking and is also near Angrignon metro;
- It's location in André-Laurendeau Cegep offers the possibility of renting classrooms, cafeteria, gymnasium or other premises to answer all your needs

Rental Information :

Line Hamel, Events and rentals coordinator

Telephone : 514-367-6373 #6882

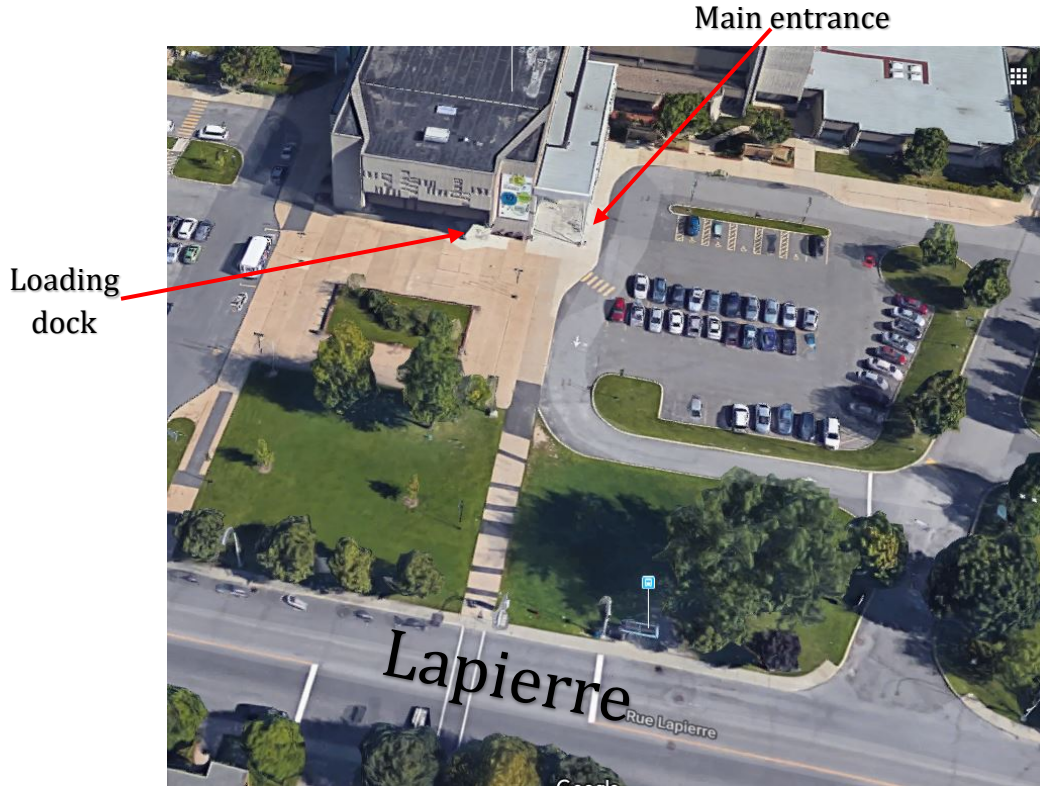
Email : location@theatredesjardins.com

Please note that the equipment list here is subject to change without notice. Please contact the technical director to check the availability

DIRECTIONS & MAP

Main Entrance / Artists

1111, rue Lapierre
LaSalle, H8N 2J4



ENTRANCE / LOADING DOCK

Access via Lapierre Street, accessible from the parking *Porte 4*

DOCK :

Access via Lapierre Street, accessible from the parking *Porte 10*

FREIGHT ELEVATOR (Access to the stage) :

Depth 10' Height 8' Width 8' Diagonal 11.5'

- *Please note that all equipment must be unloaded on a ramp and anything that will not fit in the elevator must go up through the stairs.*

VENUE

Capacity :

Pleine Salle : 813 fauteuils

Demi Salle : 314 fauteuils

Cabaret : 110 chaises sur scène

STAGE

Wooden floor covered with black linoleum

- *The use of nails and screws in the floor are strictly prohibited*

Proscenium arch

Depth	6'0"	1.8 m
Depth till the backdrop	36'6"	11.2 m
Width		

Cadre de scène

Width	47'8"	14.5 m
Height	17'5"	5.3 m
Height of the grids	18',3"	5,6 m
Width of the stage	55'5"	16.9 m
Wing Stage right	6'6"	2 m
Wing Stage left	3'3"	1 m

STAGE CURTAINS

Curtains

- 1 black front curtain, closed by hand
- 1 black back curtain, closed by hand
- 4 black leg drops of 54" (1.4 m) width and 18'3" (5.56 m) height
- 2 black leg drops of 10'8" (2.7 m) width and 18'3" (5.56 m) height
- 2 black leg drops of 25' (7.6 m) width and 18'3" (5.56 m) height
- 4 black leg drops of 24' (14.6 m) width and 18" (0.4 m) height

Cyclorama

- 1 White cyclorama made of PVC of 48' (14.6 m) width and 20' (6.1 m) height

CONTROL BOOTH

Control Booth

The boards (Sound and Lx) are located at mid-room, about 12' (3.6 m) wide
Distance between mid-stage and the booth : 49'6" (15 m)

POWER SOURCE

Lighting

1 x 400A 3 phases cam-lock 120/208V, coulisse/arrière-scène Jardin

Sound

1 x 200A 3 phases cam-lock 120/208 V, arrière-scène 50' de chaque coulisse

DRESSING ROOMS

The dressing room are located back-stage at less then 15' (4.5m) from the stage, access from both stage right and left

Main room

For 8 people. Flat screen TV LG 40" et Cable connected

Dressing room 2

For 1 or 2 person

- *Each room is equiped with full bathroom and shower*

LIGHTS

Consoles

ETC Express 48/96

MA Lighting DOT 2 with Fader Wing

Dimmer

84 dimmers 2.4 K CD80 from Strand

- 24 circuits F.O.H
- 60 circuits on Stage

Projectors

- 2 Leko ETC Source Four 19' 750W
- 12 Leko ETC Source Four 26' 750W
- 12 Leko ETC Source Four 36' 750W
- 4 Leko ETC Source Four Zoom 25-50 750W
- 20 Leko ETC Source Four Zoom 25-50 750W (**FOH only**)
- 24 Par ETC Source Four 750W
- 24 Par64 1000W
- 16 Fresnel ETC Source Four 750W
- 10 Fresnel Strand Fresnelite 6" 750W
- 6 Iris Skycyc3 Altman
- 24 Colorblast TRX Color Kinetics
- 8 R2 Spot Chauvet

Follow Spot

Robert Juliat Victor 1000W

Fog Generator

MDG Atmosphère

SOUND

Sound System

Distribution Furman 120 V

- 1 Card 8 line inputs DB25 Yamaha
- 8 pre-amp Yamaha MLA8
- 1 Audio Processor DSP Yamaha DME64N
- 1 Card Ethersound Auvitran AVY16-ES100
- 1 CD player Tascam 450
- 1 CD player Denon DN-C635 Auto Cue
- 1 Recorder SSD/CD Tascam SS-CDR1

Speakers

- 6 **Speaker "full-range" passive Nexo S1210**
- 2 **Speaker "full-range" passive Nexo S1230**
- 2 **Speaker "sub" passive Nexo RS18CI**
- 4 Speaker "full-range" passive Yamaha IF2208 + Community CPL-27
- 2 Yamaha DXS 15 Sub
- 2 Yamaha DXR 10 Top

Amplification

- 2 Amp PA Nexo NXAMP4X4
- 4 Amp moniteurs Crown XTi4000
- 1 Amp délai/Appoints Lab Gruppen C20:8X

Monitors

- 6 Stage monitor 12" JBL SRX712M
- 2 Stage monitor 15" JBL VRX915M
- 4 Stage monitor QSC model HPR 122 (pre-amplified)

Consoles

Midas M32 with Digital Patch DL32
Yamaha M7CL-ES 48x24 with 3 box 16x8

Microphones

- | | |
|---------------------|------------------------------|
| 4 Shure SM57 | 2 AKG-460 |
| 6 Shure SM58 | 2 AKG-C-391 |
| 1 Shure Beta52 | 4 "Matched Pair" Rode NT5-MP |
| 1 Shure Beta91 | 2 Shure Beta 53 Noir |
| 6 Sennheiser e935 | 4 PCC 160 |
| 4 Sennheiser e904 | 2 Crown PZM30D |
| 2 Sennheiser e906 | 1 Condensateur de podium |
| 2 Sennheiser e965 | 2 DI passive JDI |
| 4 Sennheiser e914 | 6 DI active J48 |
| 1 Sennheiser MD-421 | 1 DI stereo JDI |

Wireless

- 4 Sennheiser EW-335-G3 wireless handheld
- 2 Sennheiser EW-835-G3 wireless handheld
- 2 Sennheiser EW-352-G3 wireless headset
- 1 Shure UC 124C/58 headset/handheld/Guitar

Mic stands

- 16 K&M tall *Silver*
- 6 K&M small *Silver*
- 4 K&M Atlas *Black*
- 2 Table stand *Black*

Cables

- 2 Sub Snake 8/4 x 50'
- 1 Sub Snake 16/4 x 50'
- 1 Sub snake 12/4 x 100'
- 10 XLR 10'
- 25 XLR 25'
- 20 XLR 50'

VIDEO

- 1 Sanyo PDG-DHT8000L 8000 lumens Full HD
- 1 Motorised Screen 133" x 236" HDTV Da-Lite Professional
- 1 Cyclorama made of PVC of 48' (14.6 m) width and 20' (6.1 m) height
- 1 Roland V40 HD Switcher Video
- 1 Bluray player Samsung BD- J5900 Region Free *HDMI*
- 1 Bluray player Sony *HDMI Composite Audio LR*
- 1 Bluray player Toshiba BDX 3300 *HDMI Coax*
- 1 Receptor Bell Sat/Câble

EQUIPMENT / ACCESSOIRES

- 1 Pod JLG MLV-20
- 1 fog generator MDG Atmosphère
- 14 music stand Manhasset
- 14 light for music stand
- 4 X boom base
- 4 Round boom base
- Pipes for boom : 2 x 14', 1 x 12', 8 x 10', 2 x 7', 4 x 6', 1 x 4'
- Bags of sand

Risers

- 6 risers of 4' x 8'

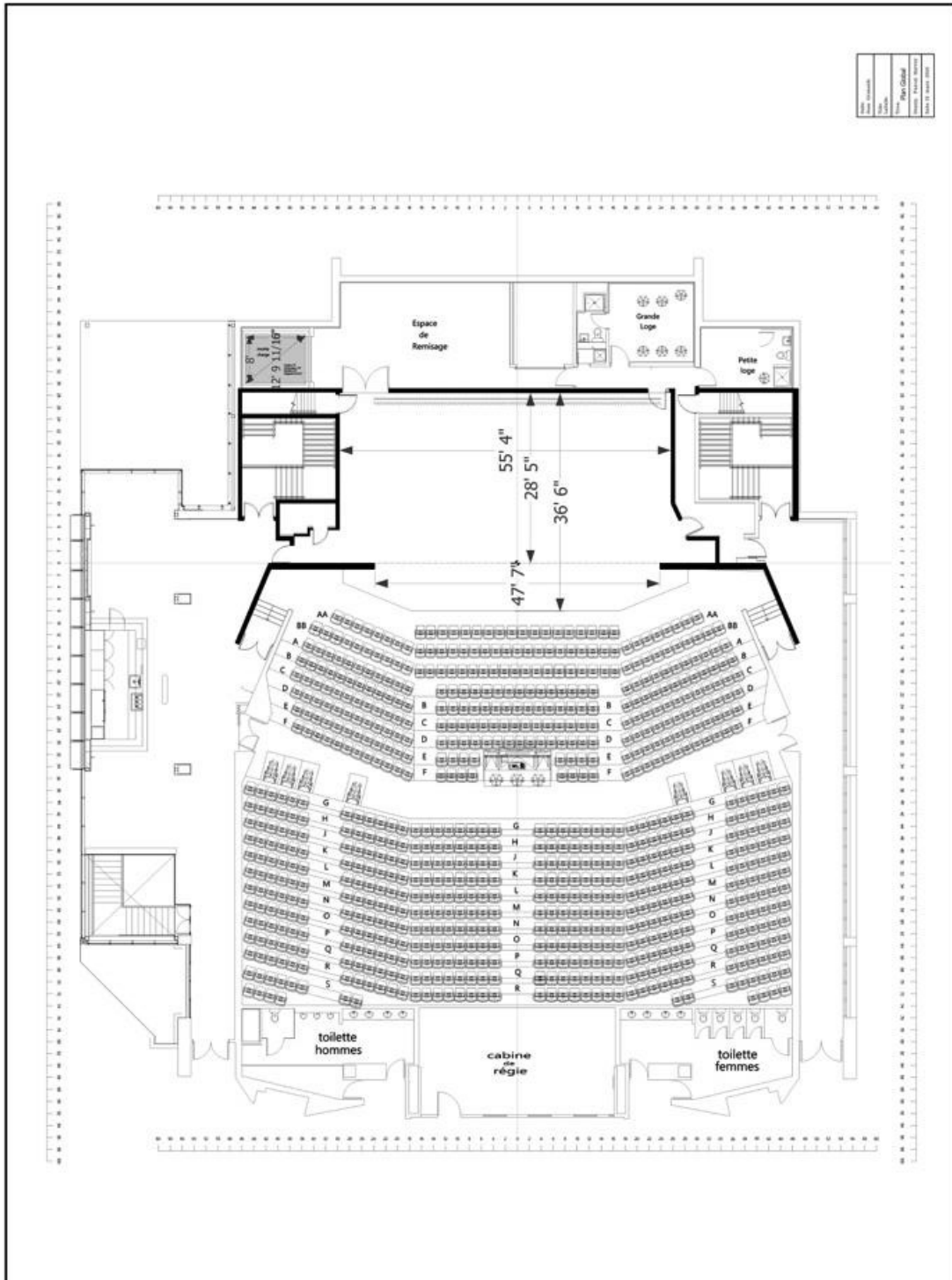
Pattes

- 36 stands of 12"
- 36 stands of 18"
- 36 stands of 24"

Intercom System

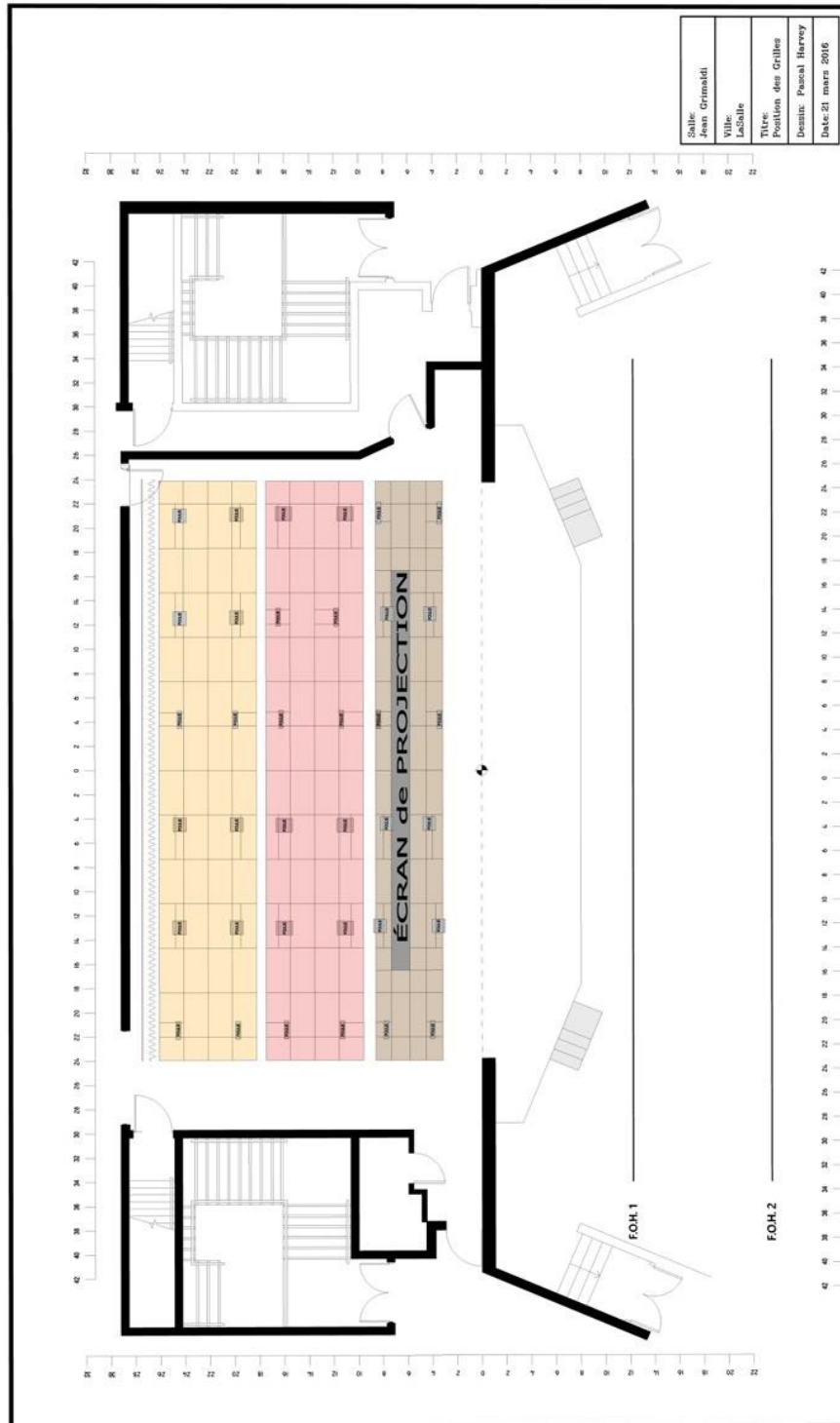
- 5 Helmet ClearCom CC-95 1 ear
- 6 Helmet ClearCom CC-260 2 ears
- 6 Belt pack, 2 lines

VENUE & STAGE



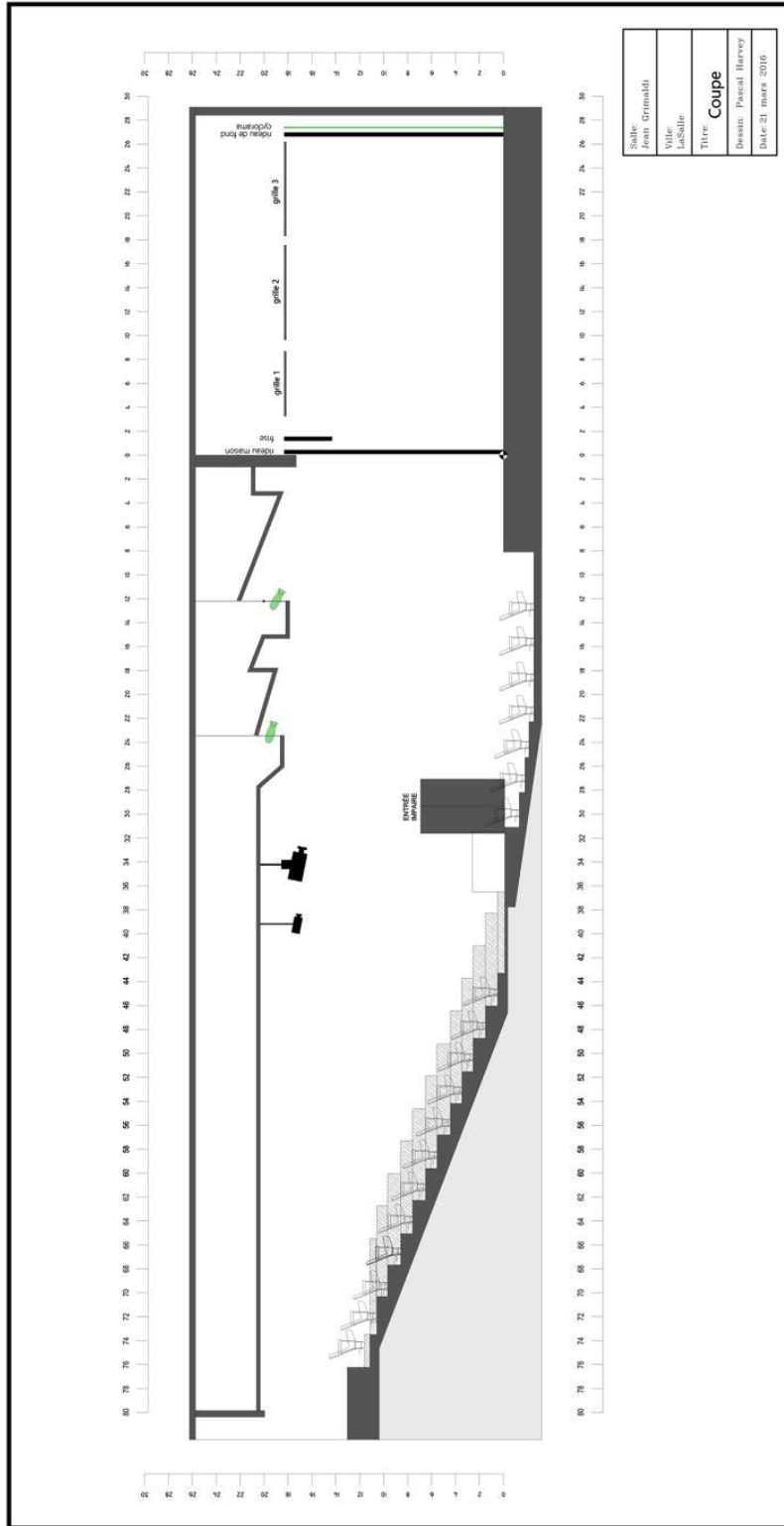
[Download this plan in .JPG](#)
[Download this plan in .DWG](#)

GRID



[Download this plan in .JPG](#)
[Download this plan in .DWG](#)

OTHER



[Download this plan in .JPG](#)
[Download this plan in .DWG](#)