

# *Théâtre* Desjardins

## TECHNICAL RIDER



1111 Lapierre Street  
Lasalle, H8N 2J4  
514-367-6373

[www.theatredesjardins.com](http://www.theatredesjardins.com)

**Are you organizing a show, an awards ceremony, a conference, a general assembly or any other event?**

**Here's what Théâtre Desjardins puts at your disposal:**

- A magnificent room of 813 comfortable armchairs or an intimate half-room of 314 armchairs;
- A place offering 1000 parking spaces and easily accessible by the main highways (Mercier Bridge, Champlain Bridge, Highway 15 and 20) and also near the Angrignon metro station;
- A reception team, bar, ticket office and cloakroom service;
- Possibility to rent various premises (classroom, meeting room, cafeteria, student café, gym) to create an event specific to your needs.

**Information**

Karine Gagnon, Technical Director  
Telephone: 514-293-4389  
Email: [dt@theatredesjardins.com](mailto:dt@theatredesjardins.com)

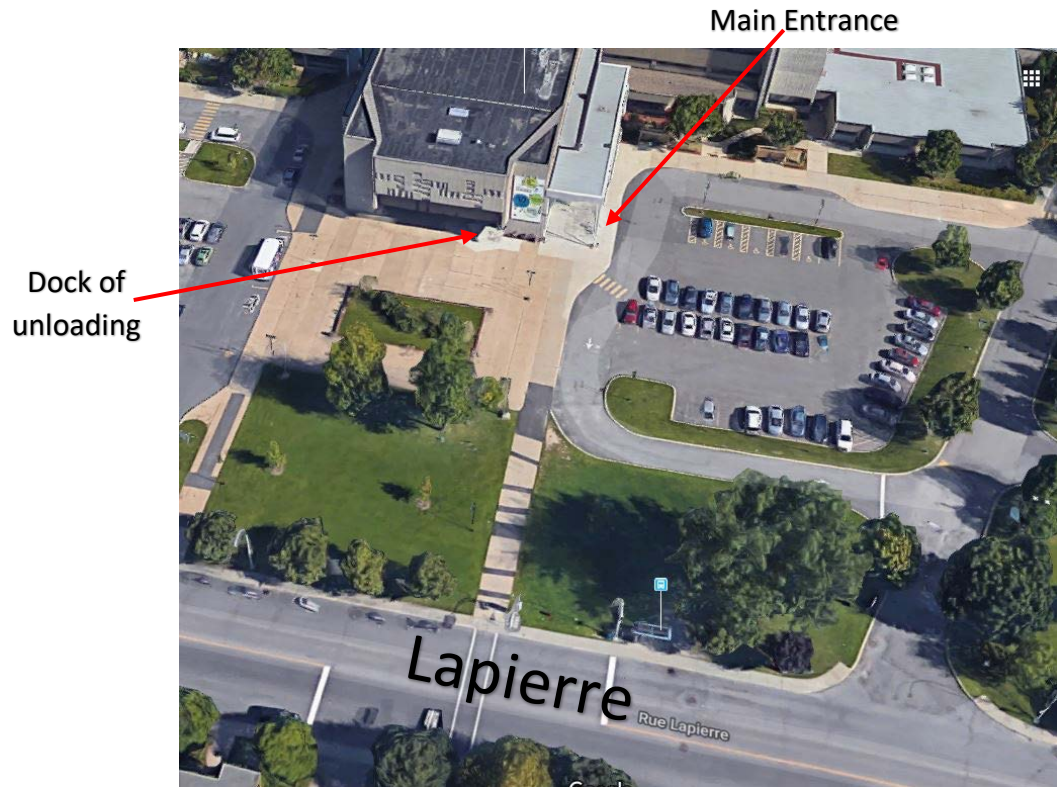
Line Hamel, Events and Rentals Coordinator  
Phone: 514-367-6373 #6882  
Email: [location@theatredesjardins.com](mailto:location@theatredesjardins.com)

***Please note that this equipment list is subject to change without notice.  
Contact the technical director to check availability.***

ADDRESS

**Main Entrance / Artists**

1111 Lapierre Street  
Lasalle, H8N 2J4



ARTISTS' ENTRANCE / LOADING DOCK

Access via Lapierre Street, accessible through the Porte 4 parking lot

**Dock:**

Access via Lapierre Street, accessible through the Porte 10 parking lot

**LIFT (Stage Access):**

**Depth 10' Height 8' Width 8' Diagonal 11.5'**

- *Please note that the unloading of equipment is carried out using a ramp and that any part that cannot be contained in the freight elevator will have to go through the stairs.*

## HALL

### **Capacity:**

Full: 813 seats

Half: 314 seats

Cabaret: 110 chairs

## SCENE

Resilient wood floor covered with black linoleum

➤ *Prohibition to screw or nail*

### **Opening of the proscenium**

Depth of proscenium 6'0" / 1.8 m

Depth to bottom curtain 36'6" / 11.2 m

Width 47'8" / 14.5 m

### **Stage frame**

Opening of the stage frame 47'8"/14.5 m

Stage frame height 17'5"5/3 m

Height of the lighting grid 18',3"/5,6 m

Stage width 55'5"1/6.9 m

Wing Righth 6'6"/2 m

Wing Left 3'3"/1 m

## SCENE WRAPPING

### **Drapes**

1 black front screen, manual closing

1 black background header, manual closing

5 pairs of black legs 13' wide and 18'3" high

6 Black side legs 25' wide and 18'3" high

4 black borders 48' wide and 18" high

### **Cyclorama**

1 White cyclorama fabric 48' wide and 20' high

## FRONT HOUSE (FOH)

### **Administration**

The consoles (Sound and Lx) are located halfway through the room, about 12' wide

Distance between the mid-stage and the control room: 49'6"

## Electrical Panels

### Lighting

1 x 400A 3 phases cam-lock 120/208V, backstage/backstage Garden

### Sound

1 x 200A 3 phases cam-lock 120/208 V, backstage 50' of each backstage

## Dressing Room

The lodge are located behind the stage, less than 15' from the stage, access from the Garden or Courtyard side

### Grand Lodge

For 8 people. LG 40' Flat Panel and Bell Receiver

### Small lodge

For 1 person

- *Each lodge is equipped with toilet, sink, shower and mirrors*

## LIGHTING

### Consoles

ETC Express 48/96

MA Lightning DOT 2 with Fader Wing

### Dimmers

84 2.4K CD80 dimmers from Strand

- 24 F.O.H circuits
- 60 circuits on Stage

### Projectors

2 Leko ETC Source Four 19 degrees 750W

12 Leko ETC Source Four 26 degrees 750W

12 Leko ETC Source Four 36 degrees 750W

4 Leko ETC Source Four Zoom 25-50 750W

20 Leko ETC Source Four Zoom 25-50 750W **(fixed in FOH)**

24 PARETC Source Four 750W

24 PAR 64 1000W

16 Fresnel ETC Source Four 750W

8 Fresnel Strand Fresnelite 6", 750W

6 Iris Skycyc3 Altman

24 Colorblast TRX Color Kinetics

8 R2 Chauvet Spot

### Follow Spot projector

Robert Juliat Victor 1000W

### Smoke generator

MDG Atmosphere

## SOUND

### Sound system

Distribution Furman 120 V  
1Card 8 inputs lines DB25 Yamaha  
8pre-amp Yamaha MLA8  
1 Yamaha DME64N Audio DSP Processor  
1Ethersound Auvitran AVY16-ES100 Card  
1Cucam 450 CD player  
1Denon DN-C635 Auto Cue CD Player  
1SS/CD Tascam SS-CDR1 recorder

### Sound boxes

**6Nexo S1210 "full register" speaker**  
**2Nexo S1230 "full register" loudspeaker**  
**2Active "serious" speaker Nexo RS18CI**  
4Real "full register" speaker Yamaha  
IF2208 + Community CPL-27  
2Yamaha DXS 15 Sub  
2Yamaha DXR 10 Top

### Microphones

6 x SM 58  
4 x SM 57  
2 x 906  
3 x 904  
2 x 914  
2 x AKG C460B  
2 x AKG SE300B

1 x MD 421  
2 x 935  
5 x 935  
1 x B52  
1 X Beta 91  
2 x PZM 300

4 x PCC 160  
1x Beta 57  
6x NT5  
6 x JDI 48  
2 x Passive JDI  
2x Passive Stereo JDI

### Wireless

4 Sennheiser EW-335-G3  
Wireless Sticks  
2 Sennheiser EW-835-G3  
Wireless Sticks  
2 Sennheiser EW-352-G3  
Wireless Headphones  
Set micro. Shure UC  
Helmet/Stick/GTR  
124C/58

### Microphone stand

16 K&M long telescopic  
boom *Silver*  
6K&M Short Telescopic  
Pole *Silver*  
4K&M Atlas *Black*  
2Table *Black*

### Wiring

2Sub Snake 8/4 x 50'  
1Sub Snake 16/4 x 50'  
1Sub snake 12/4 x 100'  
40XLR 10'  
70XLR 25'  
30XLR 50'

### Amplification

2Spa Nexo NXAMP4X4 amplifier  
4Smart XTi4000 Monitor Amplifier  
1Amplifier delay/Supplements Lab  
Gruppen C20:8X

### Monitors

6DBL SRX712M 12" Stage Monitor  
215" JBL VRX915M Stage Monitor  
4QSC Model HPR 122 (Pre-Amplified)

### Consoles

Midas M32 with DL32 Digital Patch  
Yamaha M7CL-ES 48x24 console with 3  
16x8 boxes

## VIDEO

1Sanyo PDG-DHT8000L 8000 Lumens Full HD  
1133" x 236" HDTV Da-Lite Professional motorized display  
1White fabric 48' (14.6 m) wide and 20' (6.1 m) high  
1Roland V40 HD Switcher Video  
1Dr samsung BD- J5900 Region Free HDMI Bluray *Player*  
1Syor *HDMI Composite Audio LR* Bluray Player  
1Mad BDX 3300 *HDMI Coax* Bluray Player  
1Clelli SAT/Cable Receiver

## EQUIPMENT / ACCESSORIES

1JLG MLV-20 nacelle  
1 MDG Atmosphere fog generator  
14utrins Manhasset  
14 lectern lights  
4 boom bases in X  
4 round boom bases  
Boom pipes: 2 x 14', 1 x 12', 8 x 10', 2 x 7', 4 x 6', 1 x 4'  
Set of sandbags  
18 freestanding curtains 13'x 14'

### **Passable**

6practicable 4' x 8'

### **Legs**

36pattes of 12"

36pattes of 18"

36pattes of 24"

### **Intercom system**

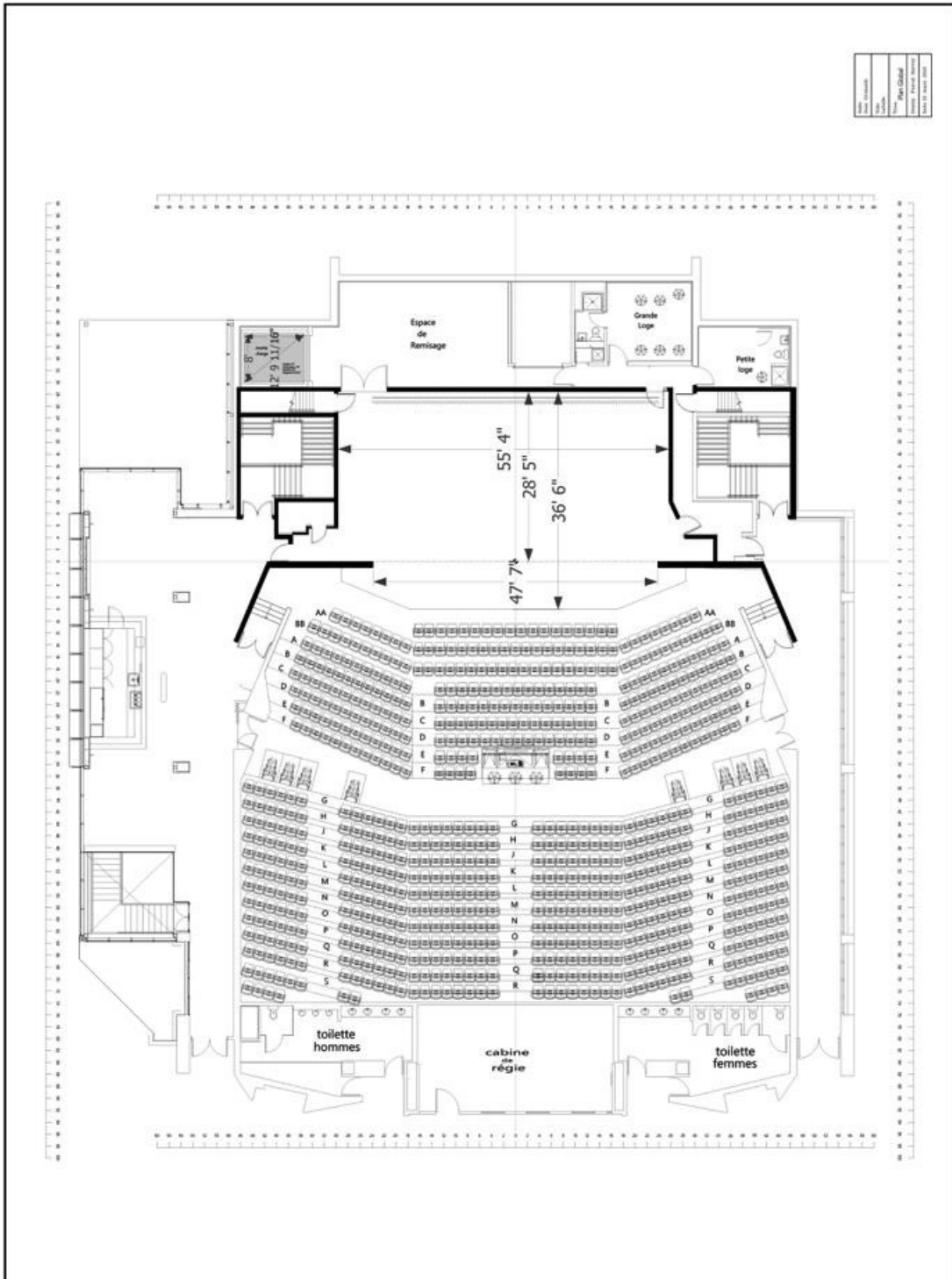
5Scaldcom CC-95 1 Ear Case

6Drack CC-260 2 Ears

6Boites (belt pack), 2 lines

4 Boxes (belt-pack wireless), 2 lines,

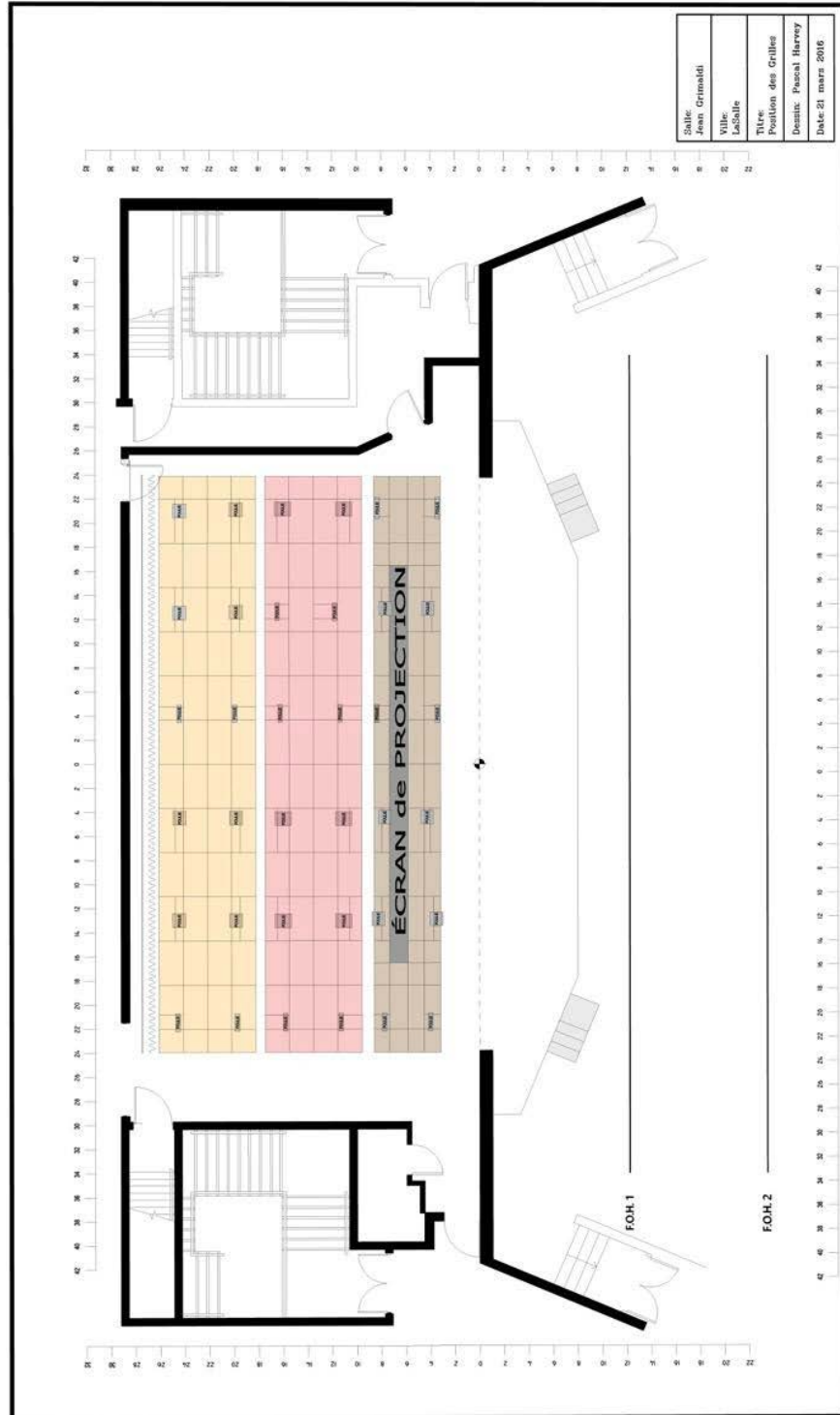
FLOOR AND STAGE PLAN



[Download this map in . JPG](#)  
[Download this map in . DWG](#)



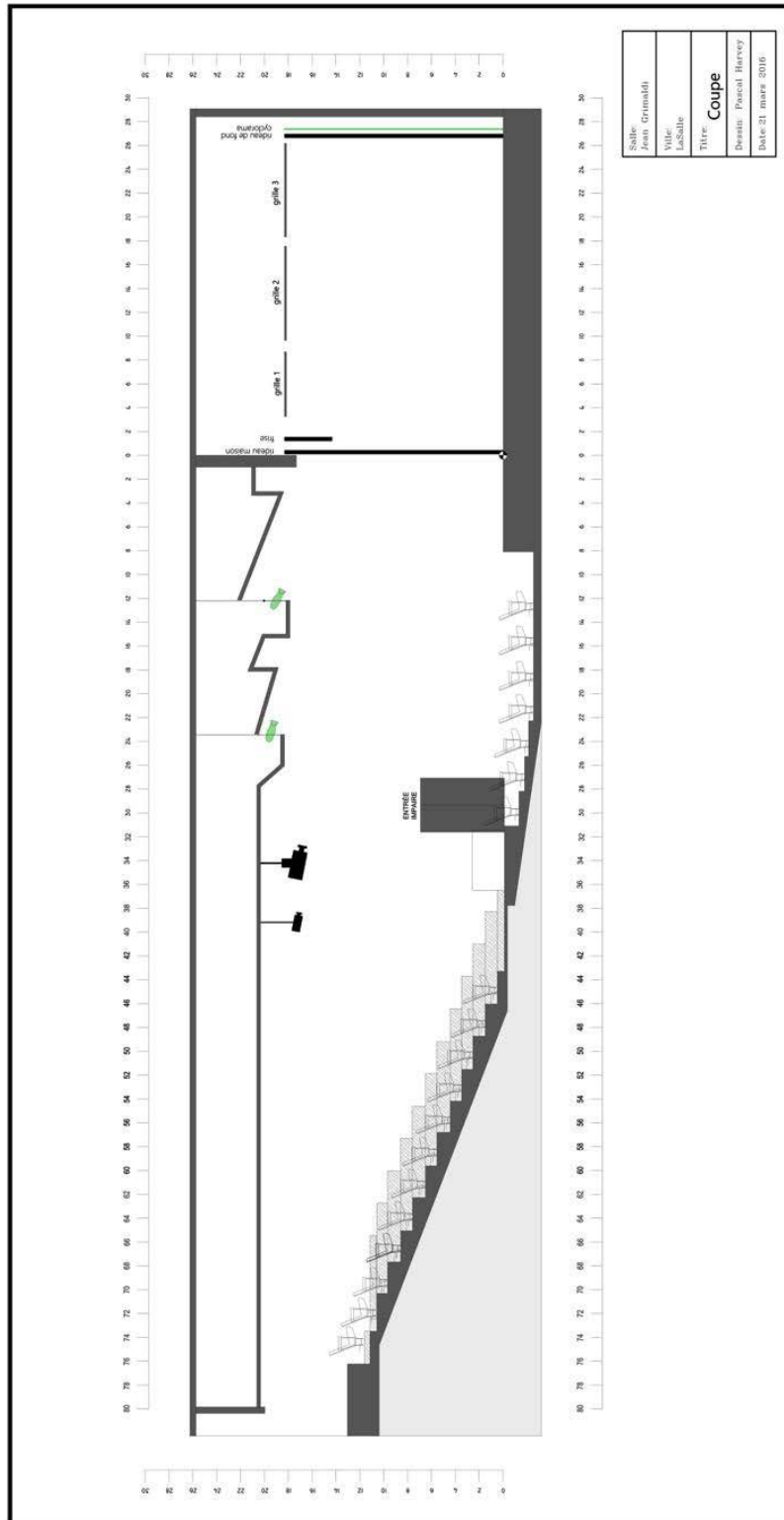
# GRID PLAN



[Download this map in . JPG](#)

[Download this map in . DWG](#)

# CUTTING PLANE



[Download this map in . JPG](#)  
[Download this map in . DWG](#)